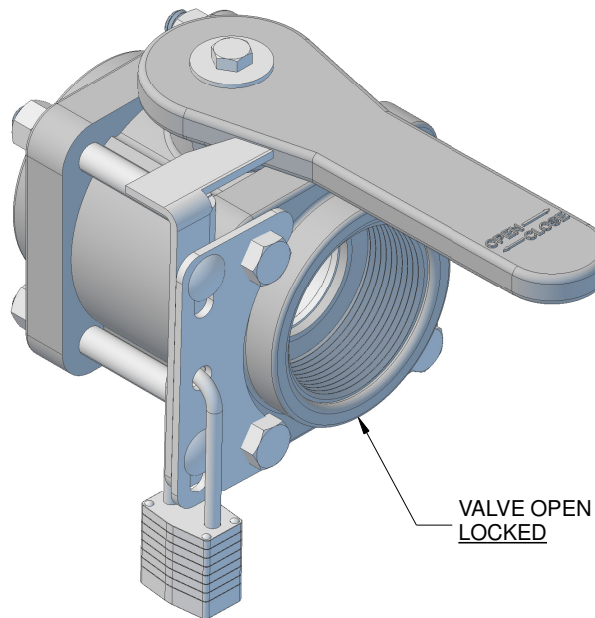
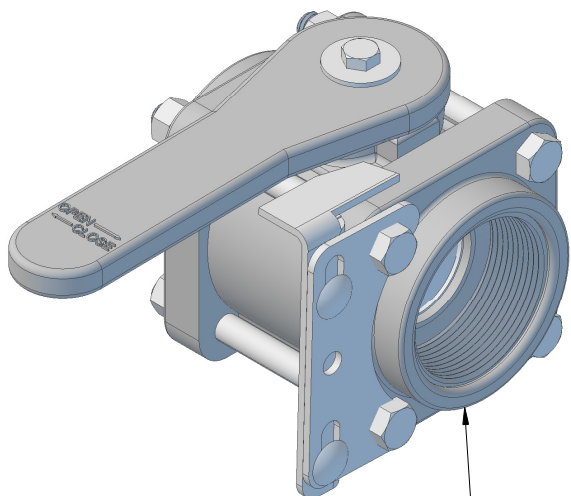


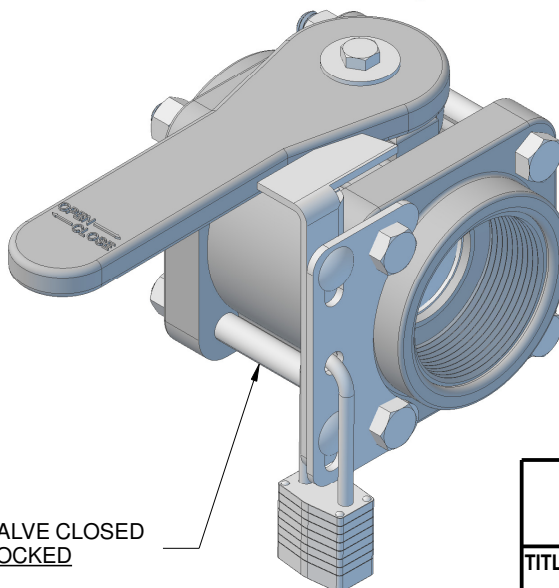
VALVE OPEN  
UNLOCKED



VALVE OPEN  
LOCKED



VALVE CLOSED  
UNLOCKED



VALVE CLOSED  
LOCKED

1. LOCKING HASP ASSEMBLY WORKS WITH VALVE SIZES 1 1/4", 1 1/2"FP AND 2" SP.
2. PADLOCK NOT INCLUDED.

**BEE VALVE, INC**

TITLE/DESC

**LOCKING HASP  
SIZE A**



**MATERIAL**  
PLATED STEEL

THIS DOCUMENT CONTAINS PROPRIETARY INFORMATION AND MAY NOT BE  
DISCLOSED TO OTHERS FOR ANY PURPOSE, NOR USED FOR MANUFACTURING  
PURPOSES WITHOUT THE WRITTEN PERMISSION OF BEE VALVE INC

**DATE**  
11/29/17

**PART NO**  
**4020A-00**

**REV**